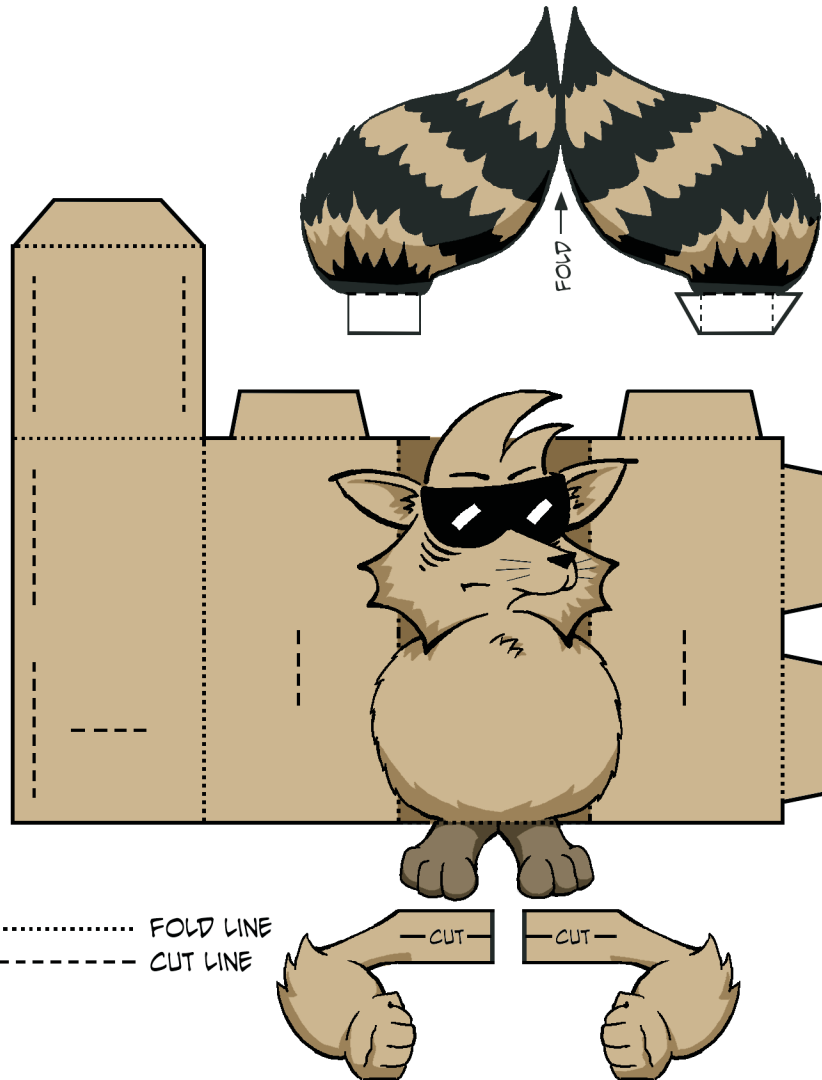


IT'S "CARL"!
A FUN, FOLDABLE PAPER TOY!



SIMPLY CUT OUT THE SHAPES ALONG THEIR EXTERIOR SOLID LINES.
THEN, CUT THE TAB SLOTS AND FOLD ON LINES WHERE SHOWN.
NO GLUE NEEDED!

THANKS TO JOE AT "TOY-A-DAY"
FOR THE USE OF HIS BASE PATTERN!
BE SURE TO VISIT "TOY-A-DAY" FOR
PLENTY OF COOL PAPER TOYS!
[TOY-A-DAY.BLOGSPOT.COM](http://toy-a-day.blogspot.com)